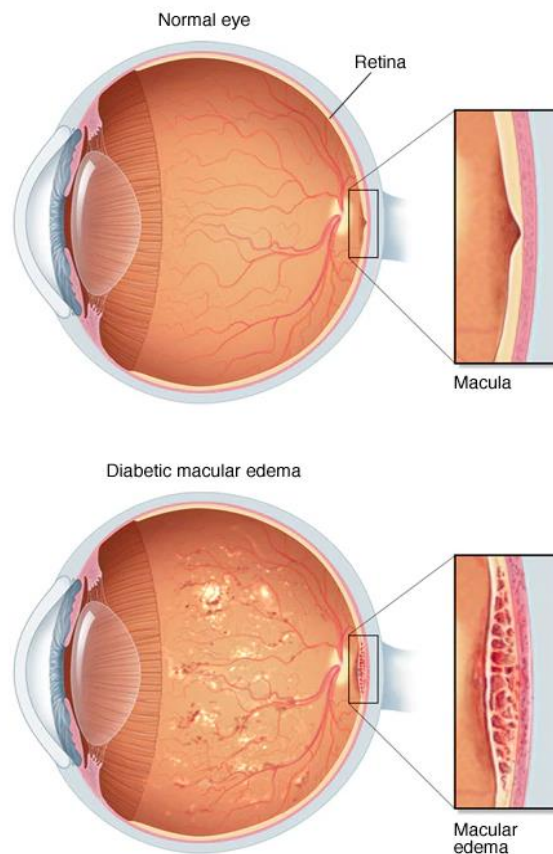


## Diabetic Macular Edema

One common eye condition of people with diabetes is diabetic macular edema. High blood sugar weakens the blood vessels in the back inner wall of your eyes (retina). This is called diabetic retinopathy. Fluid and blood can leak through the weakened vessel walls into the retina and it can cause swelling (edema) in the central part of the retina (macula) causing macular edema. The macula is important because it's a sensitive part of the eye that gives you sharp vision.



### Signs and Symptoms

1. Blurry or wavy vision
2. Colors seem washed out or faded