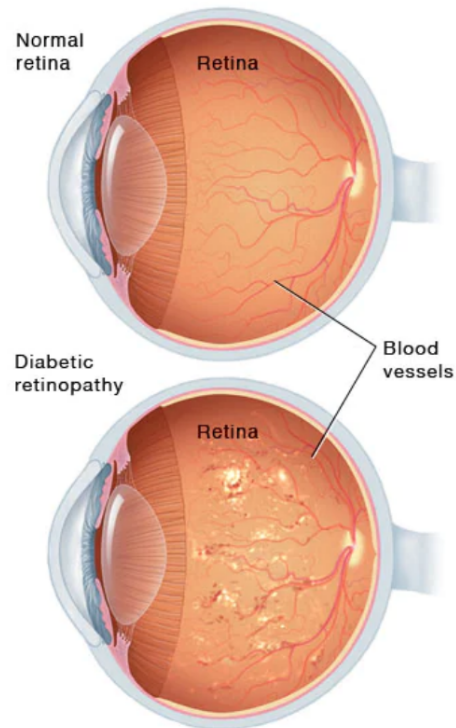


# Diabetic Retinopathy

Diabetic retinopathy is an eye problem that can cause blindness. It occurs when high blood sugar damages small blood vessels in the back of the eye, called the retina. All people with diabetes are at risk for this problem. There are things you can do to reduce your risk and prevent or slow vision loss. Diabetic retinopathy can affect both eyes. You may not have any signs at first. As it worsens, blood vessels weaken and leak blood and fluid. As new blood vessels grow they also leak blood and fluid. This causes blocks in your vision.



## **Signs of diabetic retinopathy**

- \* Floating spots in your vision
- \* Blurred vision
- \* Blocked or hazy vision