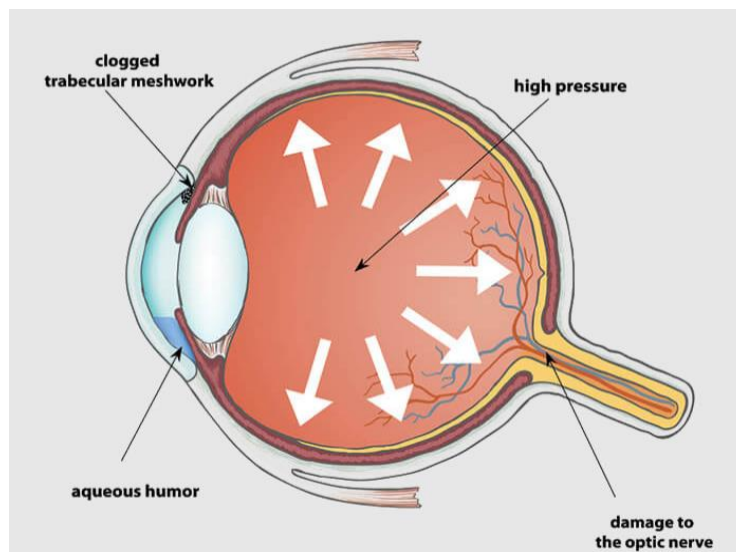


# Glaucoma

Glaucoma is a condition that damages your eye's optic nerve caused by an abnormally high pressure in your eye due to a buildup of fluid. Glaucoma is one of the leading causes of blindness for people over the age of 60 but it can be prevented with early treatment. Most people with glaucoma have no early symptoms or pain so it is important to have regular eye exams.

There are two main kinds of glaucoma:

1. **Open-angle glaucoma** often has no signs until it reaches an advanced stage. The pressure slowly damages the optic nerve over time.
2. **Angle-closure glaucoma** has a very fast rise in pressure and sudden signs. Permanent vision loss can occur within one day.



## Signs and Symptoms

Open-angle glaucoma

1. Patchy blind spots in your side or central vision
2. Tunnel vision in advanced stages

Closed-angle glaucoma

1. Severe headache and eye pain
2. Blurred vision